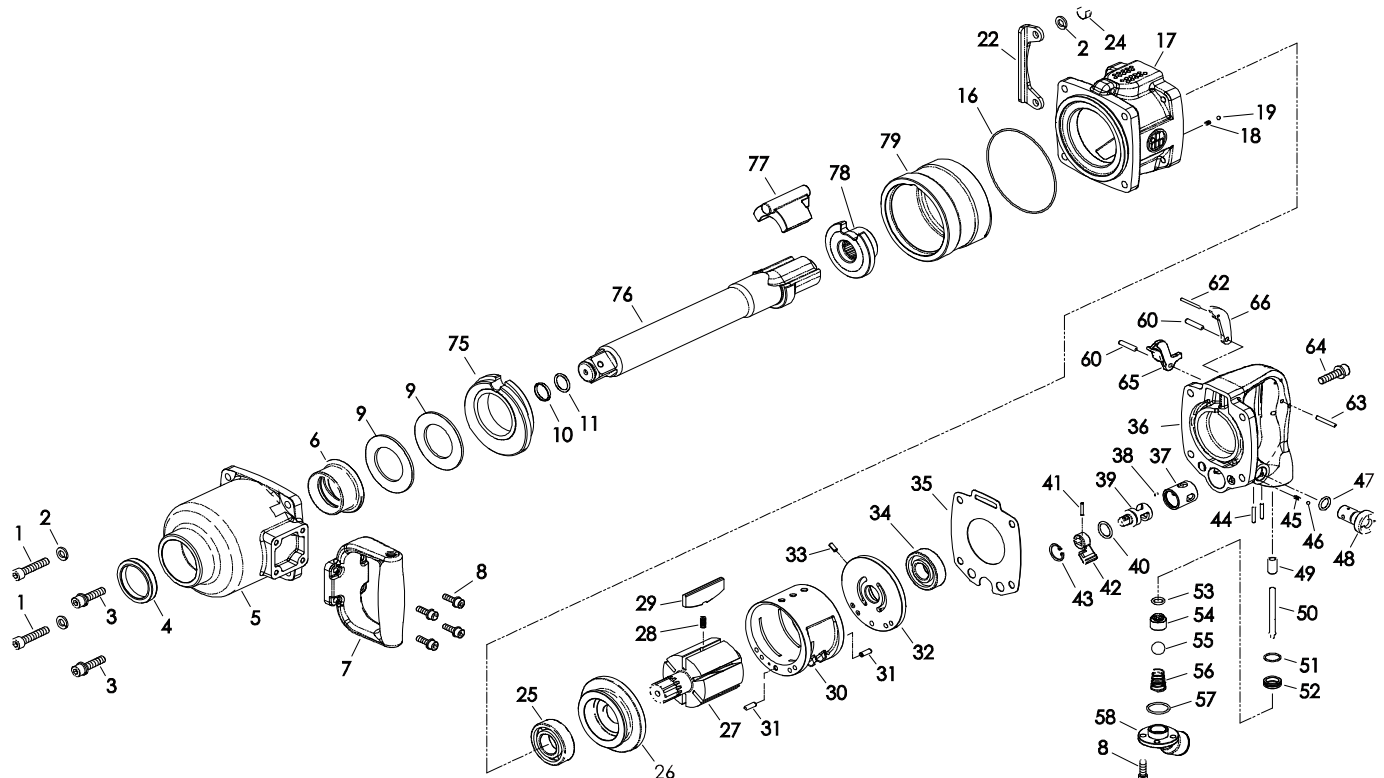


1" SQ. DR. SUPER DUTY AIR IMPACT WRENCH W/8" EXTENDED ANVIL-----PIN-LESS HAMMER

ITEM NO.:JAI-1418L



No.	Part No.	Description	Q'ty
1	JAI-1418L-1	Screw	2
2	JAI-1418L-2	Spring Washer	6
3	JAI-1418L-3	Screw w/Wahser	2
4	JAI-1418L-4	Seal	1
5	JAI-1418L-5	Hammer Case	1
6	JAI-1418L-6	Anvil Bushing	1
7	JAI-1418L-7	Side Spade Handle	1
8	JAI-1418L-8	Screw w/Wahser	8
9	JAI-1418L-9	Hammer Washer	2
10	JAI-1418L-10	Socket Retainer	1
11	JAI-1418L-11	O-Ring	1
16	JAI-1418L-16	O-Ring	1
17	JAI-1418L-17	Motor Housing Assembly	1
18	JAI-1418L-18	Spring	1
19	JAI-1418L-19	Steel Ball	1
22	JAI-1418L-22	Housing Protector	1
24	JAI-1418L-24	Lock Nut	4
25	JAI-1418L-25	Ball Bearing	1
26	JAI-1418L-26	Front End Plate	1
27	JAI-1418L-27	Rotor	1
28	JAI-1418L-28	Spring	6
29	JAI-1418L-29	Rotor Blade	6
30	JAI-1418L-30	Cylinder	1
31	JAI-1418L-31	Spring Pin	2
32	JAI-1418L-32	Rear End Plate	1
33	JAI-1418L-33	Spring Pin	1
34	JAI-1418L-34	Ball Bearing	1
35	JAI-1418L-35	Gasket	1
36	JAI-1418L-36	Trigger Handle (for Angle Inlet)	1
37	JAI-1418L-37	Bushing	1
38	JAI-1418L-38	Pin	1
RK1	JAI-1418L-RK1	Repair Kit: 4,10,11,28,29,35,53,55,57,60,65	1

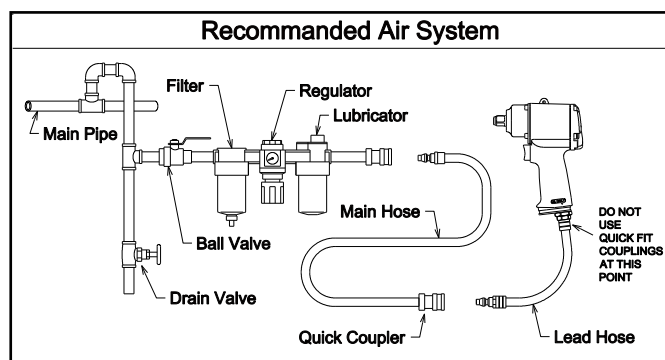
No.	Part No.	Description	Q'ty
39	JAI-1418L-39	Reverse Valve	1
40	JAI-1418L-40	O-Ring	1
41	JAI-1418L-41	Spring Pin	1
42	JAI-1418L-42	Reverse Valve	1
43	JAI-1418L-43	Snap Ring	1
44	JAI-1418L-44	Spring Pin	2
45	JAI-1418L-45	Spring	1
46	JAI-1418L-46	Steel Ball	1
47	JAI-1418L-47	O-Ring	1
48	JAI-1418L-48	Air Regulator	1
49	JAI-1418L-49	Bushing	1
50	JAI-1418L-50	Valve Tappet	1
51	JAI-1418L-51	O-Ring	1
52	JAI-1418L-52	Throttle Bushing	1
53	JAI-1418L-53	O-Ring	1
54	JAI-1418L-54	Valve Stem	1
55	JAI-1418L-55	Nylon Ball	1
56	JAI-1418L-56	Spring	1
57	JAI-1418L-57	O-Ring	1
58	JAI-1418L-58	Angle Inlet Bushing	1
60	JAI-1418L-60	Spring Pin	2
61	JAI-1418L-61	Plug (for Outside Trigger)	1
62	JAI-1418L-62	Spring Pin	1
63	JAI-1418L-63	Spring Pin	1
64	JAI-1418L-64	Screw w/Washer	4
65	JAI-1418L-65	Inside Trigger	1
66	JAI-1418L-66	Plug (for Inside Trigger)	1
75	JAI-1418L-75	Cage Bush	1
76	JAI-1418L-76	Anvil (8" Extended)(Pinless)	1
77	JAI-1418L-77	Hammer Dog (Pinless)	1
78	JAI-1418L-78	Cam	1
79	JAI-1418L-79	Hammer Cage (Pinless)	1

Operating, Maintenance and Safety Instructions

For your safety, please carefully read all instructions before operating or servicing any Soartec Impact Wrench.

Air supply requirements:

1. For the best performance and the durability of parts, inlet bushing operating air pressure should set at 6.2 bar (90 psi).
2. Secure inlet bushing before installing air fitting to avoid damaging valve body housing.
3. Recommended Air System is as diagram to the right.
4. Install Filter-Regulator-Lubricator correctly to provide accurate air pressure and lubrication of pneumatic components.



Operating and Maintenance Instructions:

1. Inspect tools before operating.
2. Always disconnect the tools from air system after operating, changing parts or doing maintenance.
3. Hand, wrist and arm injury may result from repetitive work motion and overexposure to vibration.
4. Do not use tools on non-suitable areas.
5. Use and operate tools properly to ensure its lifespan.
6. Be sure to inspect the tools if any unusual vibration or noises occur during operation.
7. Before and after operating, place a few drops of SAE #10 into inlet bushing with trigger pressed down to allow lubricating oils to properly dispense through machine.



Warning:

Eye, face, respiratory, sound and body protection must be worn while operating power tools.

Common Troubleshooting:

Event	Appearance	Possible Cause	Solution
Not operating	Air is coming from the exhaust valve	Blades broken or worn out	Replace blades
		Ball bearing damaged	Replace ball bearing
		Rusty motor or clogged with objects	Disassemble and repair
		Hammer set broken	Disassemble and repair
	No air coming from the exhaust valve	Regulator is set at OFF	Adjust regulator
		No air flow	Check air system and connections
		Valve set damaged or broken	Disassemble and repair
Low efficiency	Low revolution rate	Not enough air pressure	Check air pressure
		Regulator/Reverse valve knob is not set properly	Adjust regulator/Reverse valve knob
	Motor running abnormal or unusual noises occur	Not enough lubrication, ball bearing, upper/lower end plate, cylinder, rotor, blade damaged	Lubricate or replace parts
Motor keeps running	Impact rate increases ' torque rate decreases	Hammer set broken or worn out	Replace hammer set
	Trigger does not bounce back or does not bounce back correctly	Trigger set has other objects stuck on it or the spring is broken, deformed or rusty	Disassemble and repair
	Trigger function normally	Trigger O-ring worn out or valve set damaged or broken	Disassemble, repair and replace parts

MADE IN TAIWAN